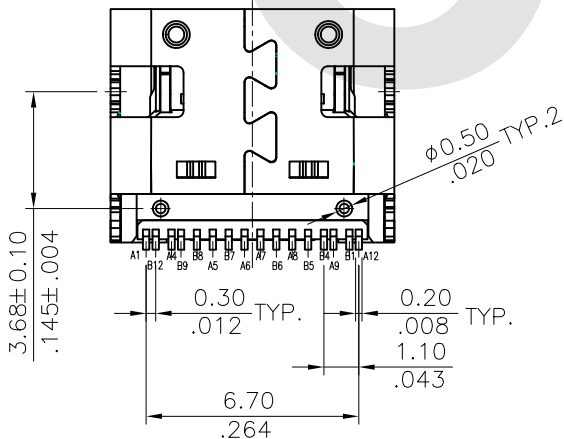
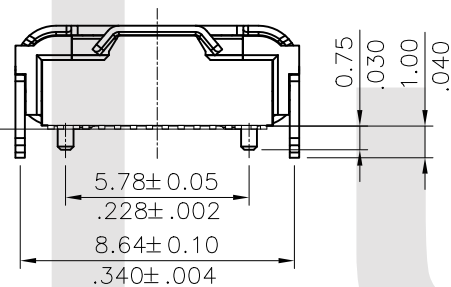
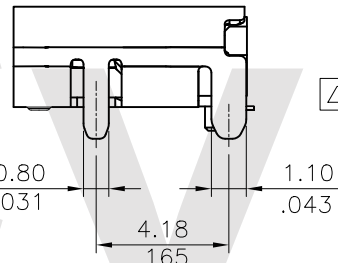
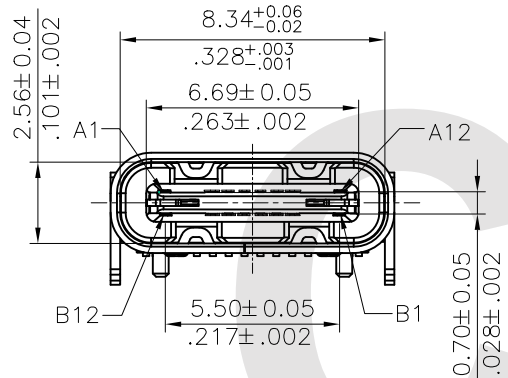


MATERIAL:

- 1.HOUSING: LCP, GLASS FIBER FILLED, BK
- 2.CONTACT: PHOSPHOR BRONZE (T=0.12mm)
- 3.SHIELD: STAINLESS STEEL (T=0.30mm)

FINISH:

- CONTACT: GOLD PLATING ON CONTACT AREA,  
MATTE TIN PLATING ON SOLDERTAILS,  
NICKEL UNDERPLATING OVER ALL
- SHELL: NICKEL PLATING



Ordering Code:

CU18 24 S \* H 1 M D \* R0 -LF -HC  
 ① ② ③ ④ ⑤ ⑥ ⑦ ⑧ ⑨ ⑩ ⑪ ⑫

- ① Series No.
- ② No of Circuits:
- ③ S= Socket
- ④ Plating option:  
 A= 1u" gold plated on Contact area,  
 Matte Tin plated on Solderetails,  
 Nickel underplating over all  
 B= 15u" gold plated on Contact area,  
 Matte Tin plated on Solderetails,  
 Nickel underplating over all  
 C= 30u" gold plated on Contact area,  
 Matte Tin plated on Solderetails,  
 Nickel underplating over all
- ⑤ Contact tail style:  
 H= Top Mount, Side Entry
- ⑥ Insulator Color: 1= Black
- ⑦ Contact Solder Style: M= SMT Type
- ⑧ Shell Solder Style: D= DIP Type
- ⑨ Transmission speeds:  
 0= For Gen1(Gold 15u")  
 1= For Gen2(Gold 30u")  
 2= For USB 2.0(Gold 1u")
- ⑩ Packing Option: R0= Reel Packing
- ⑪ -LF= For Lead Free IR Reflow Process
- ⑫ -HC= For High Current

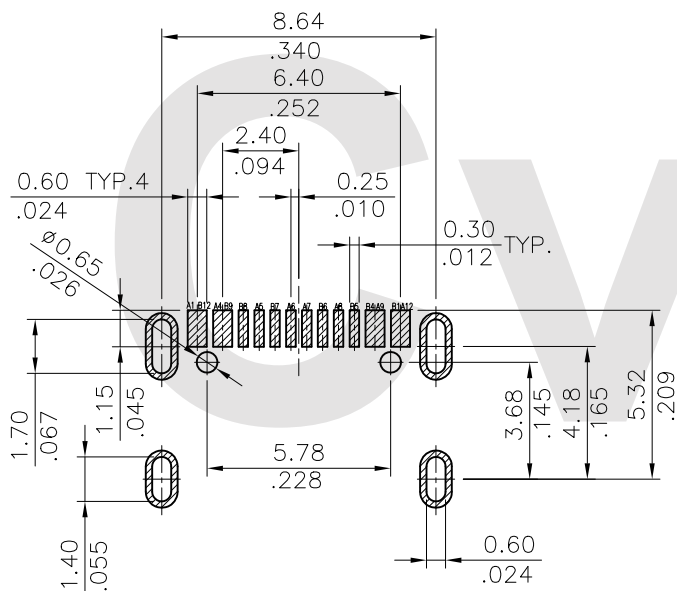
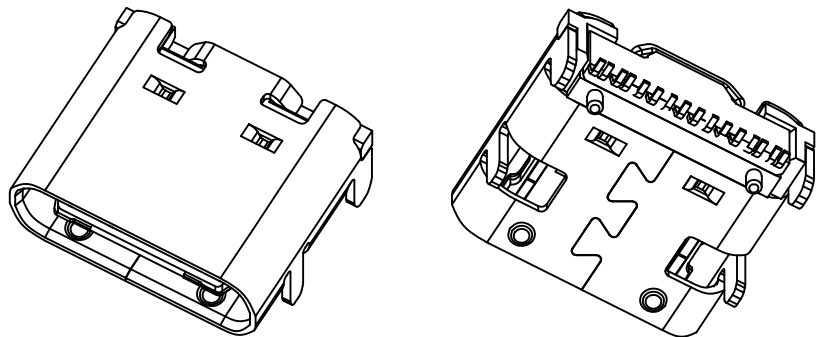
Lead Free Process      RoHS compliant



④					DATE	UNIT: mm / inch	TITLE: U.S.B TYPE C SOCKET SMT Top mount Right Angle
③					DRAWN BY: Yan	5/15-17'	MATERIAL:  FINISH:
②					ENGINEER: Yan	5/15-17'	
①					CHECKED BY: Andy	5/15-17'	
SYM	NAME	DATE	REVISIONS	APPROVED BY: Andy	5/15-17'		

CIVILUX CORP  
 2017.06.15  
 ISSUED

DRAWING NO.	CU1833SA	PART NO.	CU1816S*H1MD*R0-LF-HC
SCALE	4 / 1	SHEET	1 OF 3



RECOMMENDED P.C.B. LAYOUT (T:1.00mm)  
TOLERANCE ±0.05mm

USB TYPE-C FULL-FEATURED RECEPTACLE INTERFACE PIN ASSIGNMENTS

PIN	Signal Name	Description	PIN	Signal Name	Description
A1	GND	Ground return	B12	GND	Ground return
A2	X		B11	X	
A3			B10		
A4	Vbus	Bus Power	B9	VBUS	Bus Power
A5	CC1	Configuration Channel	B8	SBU2	Sideband Use(SBU)
A6	Dp1	Positive half of the USB 2.0 differential pair-Position 1	B7	Dn2	Positive half of the USB 2.0 differential pair-Position 2
A7	Dn1	Negative half of the USB 2.0 differential pair-Position 1	B6	Dp2	Negative half of the USB 2.0 differential pair-Position 2
A8	SBU1	Sideband Use(SBU)	B5	CC2	Configuration Channel
A9	VBUS	Bus Power	B4	VBUS	Bus Power
A10	X		B3	X	
A11			B2		
A12	GND	Ground return	B1	GND	Ground return

Lead Free Process

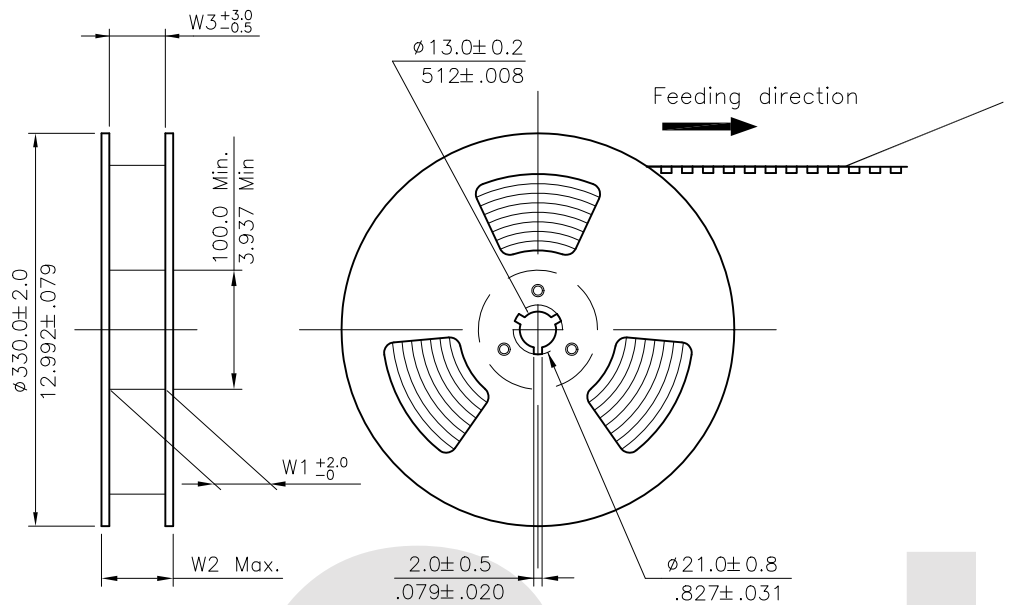
RoHS Compliant

4					DATE	UNIT: mm / inch	TITLE: U.S.B TYPE C SOCKET SMT TOP MOUNT RIGHT ANGLE
3					DRAWN BY: Yan	5/15-17'	MATERIAL:  FINISH:
2					ENGINEER: Yan	5/15-17'	
1					CHECKED BY: Andy	5/15-17'	
SYM	NAME	DATE	REVISIONS	APPROVED BY: Andy	5/15-17'	.XX ± 0.20/008 .XXX ± 0.10/004	



瀚荃股份有限公司  
CviLux Corporation

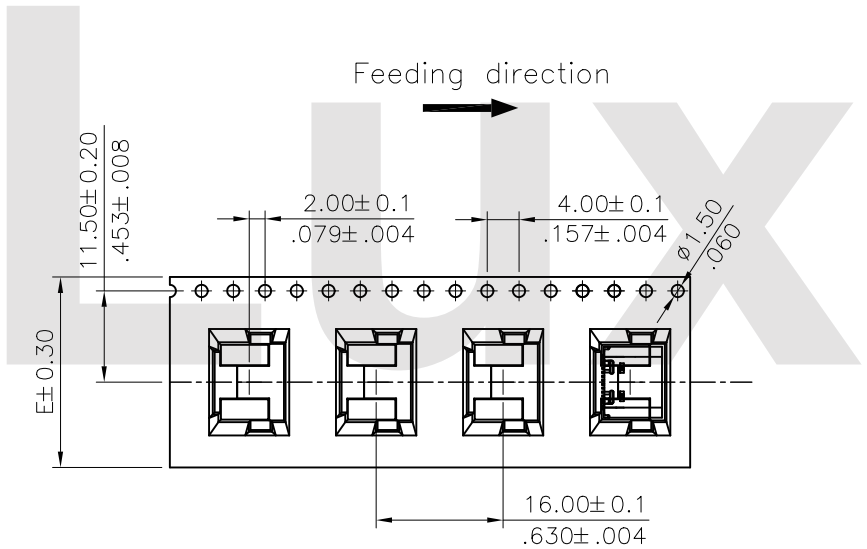
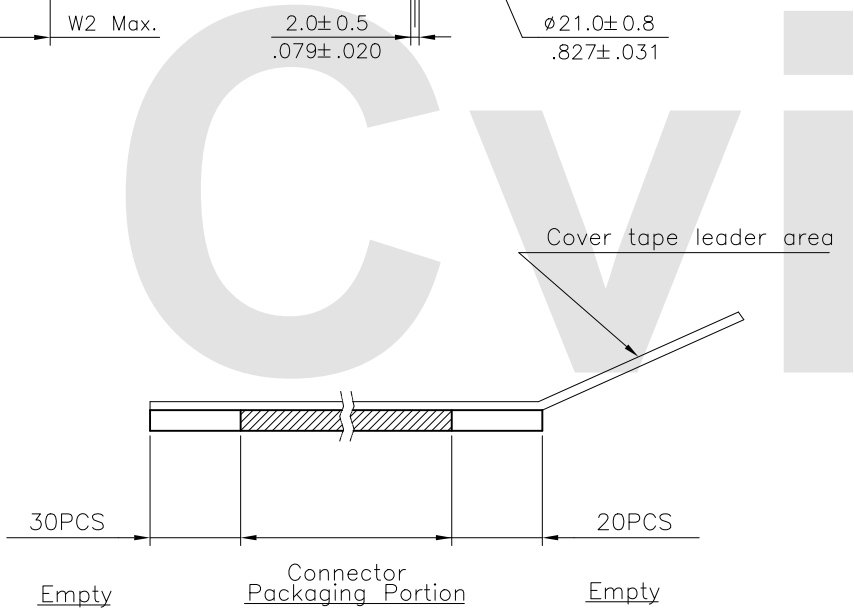
DRAWING NO.	CU1833SA	PART NO.	CU1816S*H1MD*RO-LP-HC
SCALE	4 / 1	SHEET	2 OF 3



NOTE :

- \* Reel Material : HIPS
- \* Carrier Material : Clear, Conductive Polystyrene Alloy
- \* Cover Tape Material : Polyester
- \* Cover Tape Peel Strength : 0.1N – 1.3N
- \* Carrier camber is within 1mm in 250mm
- \* All dimensions meet EIA-481-B requirements.
- \* Quantity : 1000 PCS/Reel

Dimension				Packing (Reel/Carton)
E	W1	W2	W3	
24.0(.945)	24.5(.965)	30.5(1.201)	24.5(.965)	10



RoHS Compliant

4						DATE	UNIT: mm / inch	TITLE: U.S.B TYPE C SOCKET SMT TOP MOUNT RIGHT ANGLE	 瀚荃股份有限公司 CviLux Corporation	
3			DRAWN BY: Yan		5/15-17'	TOLERANCE UNLESS OTHERWISE SPECIFIED		MATERIAL:		DRAWING NO. CU1833SA PART NO. CU1816S*H1MD*RO-LF-HC
2			ENGINEER: Yan		5/15-17'	.X ±	.X' ± 1'			
1			CHECKED BY: Andy		5/15-17'	.XX ±	.X ±	FINISH:	SCALE	
SYM	NAME	DATE	REVISIONS		APPROVED BY: Andy	5/15-17'	.XXX ±	.XX ±		SHEET 3 OF 3