

MATERIAL:

- 1.HOUSING: LCP, GLASS FIBER FILLED, BK
- 2.CONTACT: PHOSPHOR BRONZE (T=0.12mm)
- 3.GUARD PLATE:STAINLESS STEEL (T=0.10mm)
- 4.SHIELD: STAINLESS STEEL (T=0.30mm)

FINISH:

- CONTACT: GOLD PLATING ON CONTACT AREA,  
MATTE TIN PLATING ON SOLDERTAILS,  
NICKEL UNDERPLATING OVER ALL
- SHELL: NICKEL PLATING

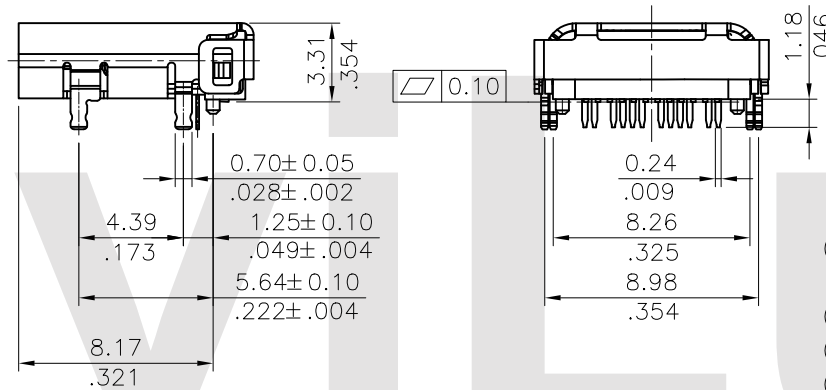
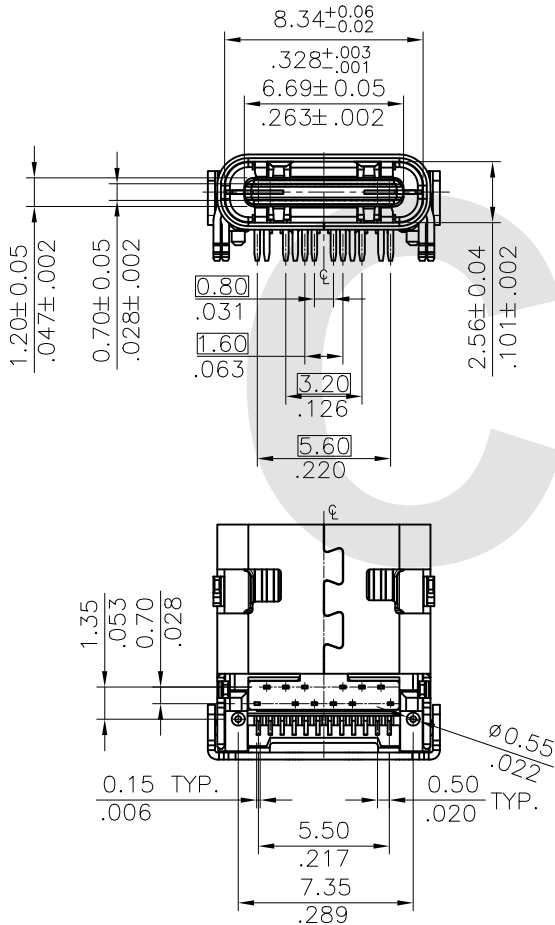
Ordering Code:

CU18 24 S \* H 1 P D \* R 1 -LF -HC  
 ① ② ③ ④ ⑤ ⑥ ⑦ ⑧ ⑨ ⑩ ⑪ ⑫ ⑬

- ① Series No.
- ② No of Circuits:
- ③ S= Socket
- ④ Plating option:

- A= 1u" gold plated on Contact area,  
Matte Tin plated on Solderetails,  
Nickel underplating over all
- B= 15u" gold plated on Contact area,  
Matte Tin plated on Solderetails,  
Nickel underplating over all
- C= 30u" gold plated on Contact area,  
Matte Tin plated on Solderetails,  
Nickel underplating over all

- ⑤ Contact tail style:  
H= Top Mount, Side Entry
- ⑥ Insulator Color: 1= Black
- ⑦ Contact Solder Style: P= SMT+DIP Type
- ⑧ Shell Solder Style: D= DIP Type
- ⑨ Transmission speeds:  
0= For Gen1(Gold 15u")  
1= For Gen2(Gold 30u")  
2= For USB 2.0(Gold 1u")
- ⑩ Packing Option: R= Reel Packing
- ⑪ Option: 1= Top Mount Type 1
- ⑫ -LF= For Lead Free IR Reflow Process
- ⑬ -HC= For High Current



Lead Free Process

RoHS compliant

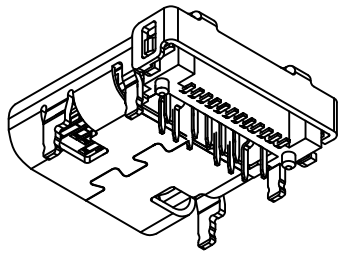


瀚荃股份有限公司  
CviLux Corporation

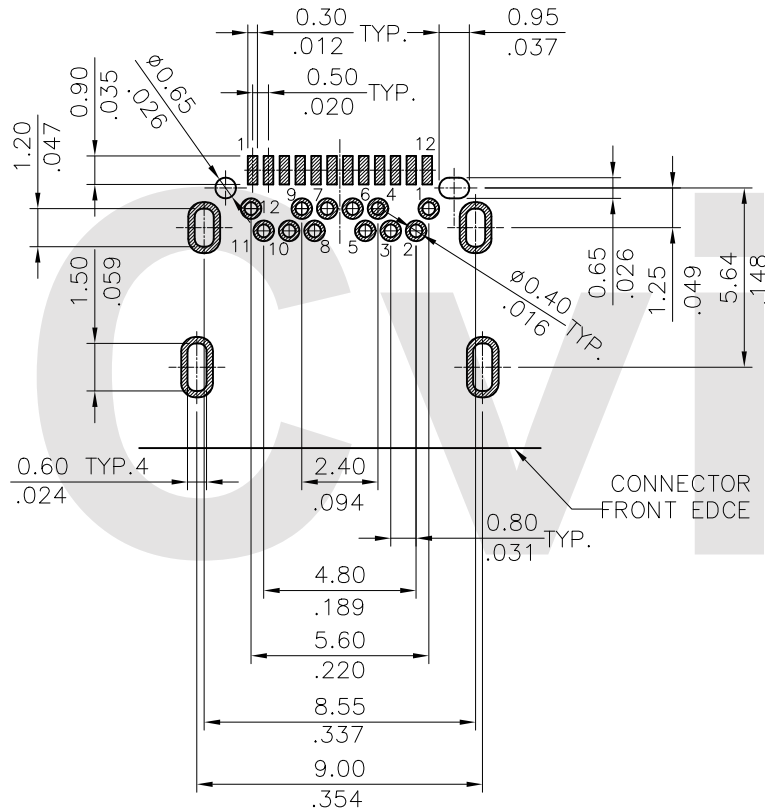
|     |      |      |           |                   |                  |                 |   |
|-----|------|------|-----------|-------------------|------------------|-----------------|---|
| ④   |      |      |           |                   | DATE             | UNIT: mm / inch | TITLE: U.S.B TYPE C SOCKET DIP+SMT<br>TOP MOUNT RIGHT ANGLE |
| ③   |      |      |           |                   | DRAWN BY: Yan    | 5/15-17'        | MATERIAL:   |
| ②   |      |      |           |                   | ENGINEER: Yan    | 5/15-17'        |   |
| ①   |      |      |           |                   | CHECKED BY: Andy | 5/15-17'        | FINISH:   |
| SYM | NAME | DATE | REVISIONS | APPROVED BY: Andy | 5/15-17'         |                 |   |

CIVILUX CORP  
 2017.06.15  
 ISSUED

|             |          |          |                       |
|-------------|----------|----------|-----------------------|
| DRAWING NO. | CU1830SA | PART NO. | CU1824S*H1PD*R1-LF-HC |
| SCALE       | 3 / 1    | SHEET    | 1 OF 3                |



USB TYPE-C FULL-FEATURED RECEPTACLE INTERFACE PIN ASSIGNMENTS



RECOMMENDED P.C.B. LAYOUT (T:1.00mm)

TOLERANCE ±0.05mm

| PIN | Signal Name | Description   | PIN | Signal Name | Description   |
|-----|-------------|---|-----|-------------|---|
| A1  | GND         | Ground return   | B12 | GND         | Ground return   |
| A2  | SSTXp1      | Positive half of first SuperSpeed TX differential pair    | B11 | SSRXp1      | Positive half of first SuperSpeed RX differential pair    |
| A3  | SSTXn1      | Negative half of first SuperSpeed TX differential pair    | B10 | SSRXn1      | Negative half of first SuperSpeed RX differential pair    |
| A4  | Vbus        | Bus Power   | B9  | VBUS        | Bus Power   |
| A5  | CC1         | Configuration Channel                                     | B8  | SBU2        | Sideband Use(SBU)   |
| A6  | Dp1         | Positive half of the USB 2.0 differential pair-Position 1 | B7  | Dn2         | Positive half of the USB 2.0 differential pair-Position 2 |
| A7  | Dn1         | Negative half of the USB 2.0 differential pair-Position 1 | B6  | Dp2         | Negative half of the USB 2.0 differential pair-Position 2 |
| A8  | SBU1        | Sideband Use(SBU)   | B5  | CC2         | Configuration Channel                                     |
| A9  | VBUS        | Bus Power   | B4  | VBUS        | Bus Power   |
| A10 | SSRXn2      | Negative half of second SuperSpeed RX differential pair   | B3  | SSTXn2      | Negative half of second SuperSpeed TX differential pair   |
| A11 | SSRXp2      | Positive half of second SuperSpeed RX differential pair   | B2  | SSTXp2      | Positive half of second SuperSpeed TX differential pair   |
| A12 | GND         | Ground return   | B1  | GND         | Ground return   |

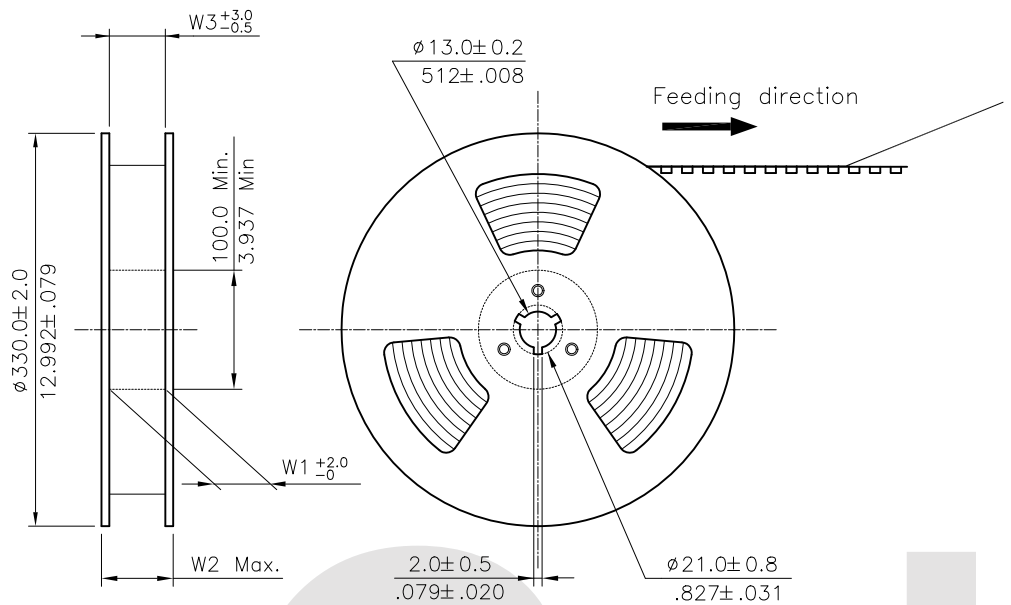
Lead Free Process

RoHS Compliant

| SYM | NAME | DATE | REVISIONS | APPROVED BY:      | DATE     | UNIT: mm / inch                         | TITLE:   |
|-----|------|------|-----------|-------------------|----------|---|--|
| 4   |      |      |           |                   |          |   | U.S.B TYPE C SOCKET DIP+SMT<br>TOP MOUNT RIGHT ANGLE |
| 3   |      |      |           |                   |          | TOLERANCE<br>UNLESS OTHERWISE SPECIFIED |  |
| 2   |      |      |           |                   |          | .X ± 0.30/.012 X: ± 1'                  |  |
| 1   |      |      |           |                   |          | .XX ± 0.20/.008 .X: ± 0.5'              |  |
|     |      |      |           |                   |          | .XXX ± 0.05/.002 .XX: ± 0.02'           |  |
|     |      |      |           | DRAWN BY: Yan     | 5/15-17' |   | MATERIAL:  |
|     |      |      |           | ENGINEER: Yan     | 5/15-17' |   | FINISH:  |
|     |      |      |           | CHECKED BY: Andy  | 5/15-17' |   |  |
|     |      |      |           | APPROVED BY: Andy | 5/15-17' |   |  |



|             |          |          |                       |
|-------------|----------|----------|-----------------------|
| DRAWING NO. | CU1830SA | PART NO. | CU1824S*H1PD*R1-LF-HC |
| SCALE       | 4 / 1    | SHEET    | 2 OF 3                |

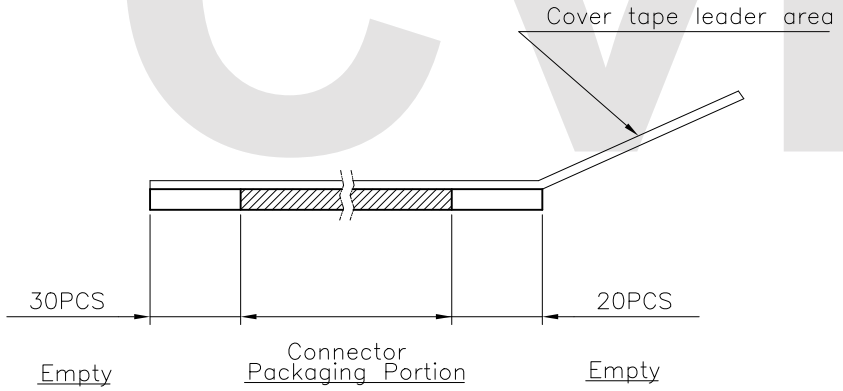
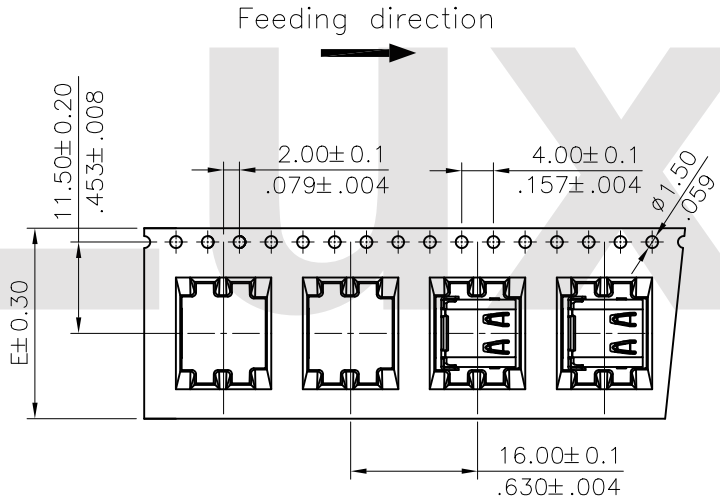


NOTE :

- \* Reel Material : HIPS
- \* Carrier Material : Clear, Conductive Polystyrene Alloy
- \* Cover Tape Material : Polyester
- \* Cover Tape Peel Strength : 0.1N – 1.3N
- \* Carrier camber is within 1mm in 250mm
- \* All dimensions meet EIA-481-B requirements.
- \* Quantity : 700 PCS/Reel

| Dimension  |            |             |            | Packing<br>(Reel/Carton) |
|------------|------------|-------------|------------|--------------------------|
| E          | W1         | W2          | W3         |                          |
| 24.0(.945) | 24.5(.965) | 30.5(1.201) | 24.5(.965) | 8                        |

CviLUX



WIDTH : 24 mm Carrier

RoHS Compliant

|     |      |      |           |                   |                  |   |  |                                    |                                |
|-----|------|------|-----------|-------------------|------------------|---|--|------------------------------------|--------------------------------|
| 4   |      |      |           |                   | DATE             | UNIT: mm / inch                         | TITLE: U.S.B TYPE C SOCKET SMT<br>Top mount Straight | <br>瀚荃股份有限公司<br>CviLux Corporation |                                |
| 3   |      |      |           |                   | DRAWN BY: Yan    | TOLERANCE<br>UNLESS OTHERWISE SPECIFIED | MATERIAL:  |                                    |                                |
| 2   |      |      |           |                   | ENGINEER: Yan    | .X ±      X' ± ι'                       |  |                                    |                                |
| 1   |      |      |           |                   | CHECKED BY: Andy | .XX ±     .X' ±                         | FINISH:  |                                    |                                |
| SYM | NAME | DATE | REVISIONS | APPROVED BY: Andy | 5/15-17'         | .XXX ±    .XX' ±                        |  |                                    |                                |
|     |      |      |           |                   |                  |   |  | DRAWING NO. CU1830SA               | PART NO. CU1824S*H1PD*R1-LF-HC |
|     |      |      |           |                   |                  |   |  | SCALE                              | SHEET 3 OF 3                   |

CVILUX CORP  
 2017.06.15  
 ISSUED